

HURRICANE PREPAREDNESS CHECKLIST

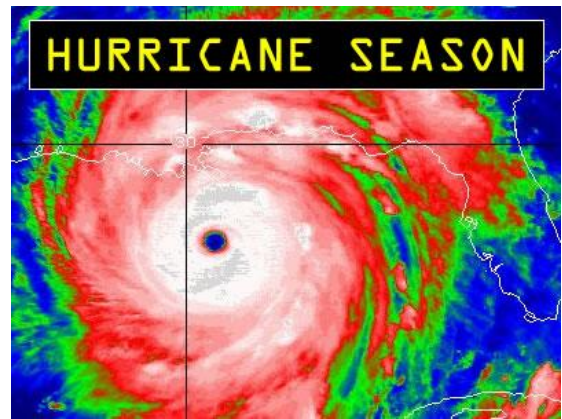
Hurricanes are one of nature's most powerful and destructive forces. This checklist will help your business, employees and community prepare for the storm.

✓	BEFORE THE STORM
	Stay up-to-date on the storm's progress via radio, TV or NOAA Weather Radio All Hazards receiver.
	Determine safe evacuation routes inland as well as alternative routes.
	Make sure your Disaster Kit is fully stocked and fresh batteries & supplies are included.
	Ensure you have an emergency communication plan in place prior to the storm, evacuation, or threat.
	Backup all data on servers and personal computers. If the backup site is within the area that may be affected by the storm, take backup tapes with you in the evacuation.
	Turn off all non-critical devices such as server monitors and workstations and other non-essential electrical equipment.
	Check the integrity of the uninterruptible power supply (UPS). Move the UPS to the highest level possible above the floor.
	Inspect and make emergency repairs to drains, gutters and flashing.
	Strap or anchor to the roof deck support assembly (e.g., the joists) all roof-mounted equipment such as HVAC units and exhaust vents.
	Call Agility to go on Alert.
	Alert a third party about your company's relocation plan in the event the storm makes your location inaccessible.
	Protect/relocate vital records including your insurance policy. Be sure your risks are protected.
	Install windstorm shutters/plywood over windows and doors.
	Take the following steps so that items outdoors will not blow away or cause damage: Remove all loose debris <ul style="list-style-type: none"> ○ Anchor or relocate all nonessential equipment to a safe indoor location ○ Secure storage of flammable liquid drums, or move them to a sheltered area (but never into main facility areas) ○ Anchor all portable buildings (e.g., trailers) to the ground ○ Secure large cranes and other heavy equipment ○ Make sure outdoor signs are properly braced
	Ensure that the employees who volunteered to stay on site have proper supplies and equipment (drinkable water, nonperishable food, medical, flashlights, walkie-talkies).
	Have cash on hand for post-windstorm needs, such as buying food and supplies, or paying employees and contractors.
	Ensure you know which employees are certified in CPR, EMT, etc.
	Repair and fill above-ground tanks with water.
	Fill fuel tanks of generators, fire pumps, and all company-owned vehicles.
	Remove as many goods as possible from the floor, or ship them out of the facility.
	Shut off gas to minimize fire loss.
	Disconnect the main electrical feeds to the facility, if possible, to prevent a potential fire caused by short-circuiting of damaged equipment.
	Ensure remote access to your company's website so updates about your availability can be made.

✓	DURING THE STORM
	Patrol the property continuously and watch for roof leaks, pipe breakage, fire or structural damage. During the height of a windstorm, personnel should remain in a place that has been identified as safe from wind and flood.
	Constantly monitor any equipment that must remain on line.
	During power failure, turn off electrical switches to prevent reactivation before necessary checks are completed.
✓	AFTER THE STORM
	Keep listening to radio, TV or NOAA Weather Radio All Hazards to make sure the storm has passed.
	Wait until an area is declared safe before entering to secure the site and survey damage.
	Secure 24 hour security if needed.
	Watch for closed roads. If you come upon a barricade or a flooded road, turn around.
	Call Agility and move forward from alert or stand down.
	Survey for safety hazards such as live wires, leaking gas or flammable liquids, poisonous gases, and damage to foundations or underground piping.
	Call in key personnel and notify contractors to start repairs. Make sure safety systems are fully implemented before work is allowed to begin. This means controlling smoking and other open flame sources. Require contractors to share responsibility for establishing fire-safe conditions before and during the job.
	Begin salvage as soon as possible to prevent further damage: <ul style="list-style-type: none"> ○ Cover broken windows and torn roof coverings immediately ○ Separate damaged goods, but beware of accumulating too much combustible debris inside a building
	Clean roof drains and remove debris from roof to prevent drainage problems.
✓	YOUR PEOPLE
	Have all employees, vendors, client contact information on hand.
	Use the Alert Notification System on MyAgility to keep all posted on status and next steps.
	During evacuation have a central point of contact for all employees, and ensure you know where your people are located.
	During evacuation consider your phones lines- redirection to cell phones, answering service, Google Voice, or Agility lines could be critical.
	Following the storm, notify all critical people of next steps, based on damage.

In flat areas, storm surges may rush many miles inland. Hurricanes often generate heavy rainfall, which can cause severe flooding over wide areas. Hurricanes also may spawn deadly tornadoes. Flooding and tornadoes may affect areas well inland. You should also prepare for these potential interruptions.

The National Weather Service rates hurricanes by their intensity, using a scale of one to five. The scale categorizes storms according to their sustained winds, the storm surges produced, and expected damage. Businesses located within areas of risk should have a hurricane preparedness plan. It is a good idea to develop a plan of action for your business and your staff to be ready for this type of interruption.



Agility is your trusted advisor and partner in preparedness through these events. Please contact Agility with any imminent threat and place us on Alert. When faced with an interruption please contact Agility to quickly recover, by dialing **877.364.9393**.

Know the Terms:

Tropical Depression: An organized system of clouds and thunderstorms with a defined surface circulation and maximum sustained winds of 38 MPH (33 knots) or less. Sustained winds are defined as one-minute average wind measured at about 33 ft (10 meters) above the surface.

Tropical Storm: An organized system of strong thunderstorms with a defined surface circulation and maximum sustained winds of 39–73 MPH (34–63 knots).

Hurricane: An intense tropical weather system of strong thunderstorms with a well-defined surface circulation and maximum sustained winds of 74 MPH (64 knots) or higher.

Storm Surge: A dome of water pushed onshore by hurricane and tropical storm winds. Storm surges can reach 25 feet high and be 50–1000 miles wide. Storm surge is by far the greatest threat to life and property along the immediate coast.

Storm Tide: A combination of a storm surge and the normal tide (i.e., a 15-foot storm surge combined with a 2-foot normal high tide over the mean sea level created a 17-foot storm tide).

Hurricane/Tropical Storm Watch: Hurricane/tropical storm conditions are possible in the specified area of the watch, usually within 48 hours. Tune in to NOAA Weather Radio, commercial radio, or television for information.

Hurricane/Tropical Storm Warning: Hurricane/tropical storm conditions are expected in the specified area of the warning, usually within 36 hours of the onset of tropical storm force winds. Complete storm preparations and immediately leave the threatened area if directed by local officials.

Extreme Wind Warning: Extreme sustained winds of a major hurricane (115 mph or greater), usually associated with the eyewall, are expected to begin within an hour. Take immediate shelter in the interior portion of a well-built structure.

Short Term Watches and Warnings: These warnings provide detailed information about specific hurricane threats, such as flash floods and tornadoes.